**DESCRIPTION**

The Model OH/OB Series oil-fired unit heaters are available in inputs of 118,000, 173,000, and 229,000 BTUH with 82% efficiency output. These completely packaged unit heaters burn No. 2 fuel oil.

Model OH heaters are equipped with a propeller fan. The fan is enclosed in an OSHA-type full safety fan guard.

Model OB heaters are equipped with a centrifugal blower. The blower has an adjustable belt drive and is capable of handling external pressure of .25" w.c. Blower models are equipped with a belt guard and a blower inlet guard.

All units feature a low-stress, 18-gauge steel exchanger and a heavy, 13-gauge combustion chamber with large, easily accessible, service panels. The oil burner assembly has a pressure-atomizing gun type burner that provides excellent flame retention and an integral fuel pump. The burner has an electric spark ignition system with an electronic cad-cell flame safety system with manual reset. All models have a combination flame observation port and flue gas sampling port.

Standard features include fan and limit controls. The fan control prevents circulation of cold air at startup and provides heat dissipation while the unit is hot after the burner shuts off. The safety limit control provides unit protection from high temperature caused by an airflow restriction or motor failure. All units are wired for 115 volt, 60 Hz power supply with 24 volt controls.

Model OH/OB oil-fired unit heaters are approved for installation in The United States and Canada by the Canadian Standards Association (CSA).

NOTE: Not certified for residential use.

STANDARD FEATURES

- Full automatic, thermostatically controlled operation
- Low stress, 18-gauge steel heat exchanger
- Heavy, 13-gauge steel combustion chamber
- 115/1/60 supply voltage
- 24-volt control voltage transformer
- Atomizing power burner with single-stage fuel pump
- Electric spark ignition with cad-cell flame safety system
- Fan and limit safety controls
- Toggle disconnect switch
- Propeller fan - OH Models
- Centrifugal blower with adjustable belt drive - OB Models
- Full safety fan guard - OH Models
- Belt guard and blower inlet guard - OB Models
- Totally enclosed, permanently lubricated PSC motor with internal overload protection - OH Models
- Total enclosed, permanently lubricated split-phase motor with internal overload protection - OB Models
- Built-in burner service tray
- Large easily accessible service panels for combustion chamber and heat exchanger maintenance
- Observation and flue gas sampling ports
- Individually adjustable horizontal louvers
- 4-point suspension (1/2" threaded connectors)
- Draft regulator - CSA Models

OPTIONAL FEATURES - Field Installed

- Vertical louvers
- Atomizing burner with two-stage fuel pump
- 30 GPH booster pump assembly with motor and two-stage fuel pump
- 70 GPH booster pump assembly with motor and two-stage fuel pump
- Booster pump pressure switch - used for intermittent pump operation in pressurized system
- Oil safety valve - recommended for all systems -- prevents siphoning and over pressure
- Draft Regulator - UL listed model
- Draft inducer relay
- Hanger kit to suspend from 1" pipe
- Outside combustion air adapter (not available with CSA models)
- Thermostat, single stage, 24-volt (40-90°F)
- Thermostat guard with locking cover

A UL Listed (or equivalent) oil supply tank must be used with Reznor® oil-fired heaters.

Model OT-250 fuel tank is available from Reznor.

•UL Listed

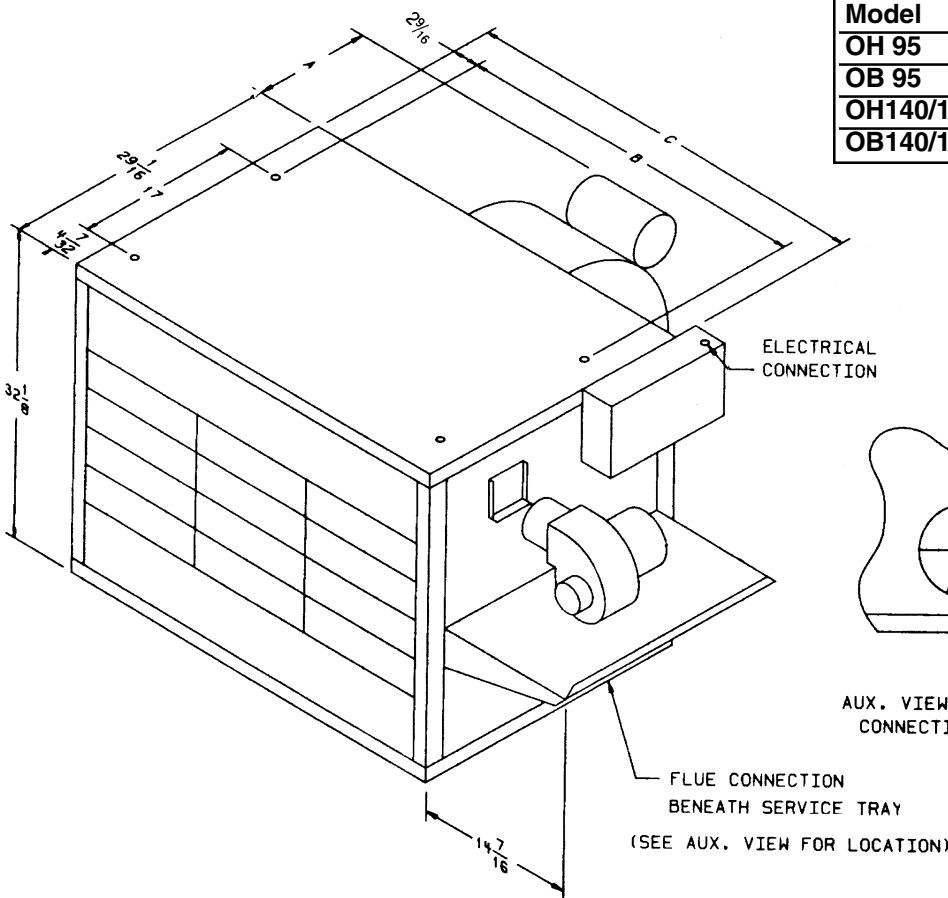
•250-gallon capacity

•Bench top

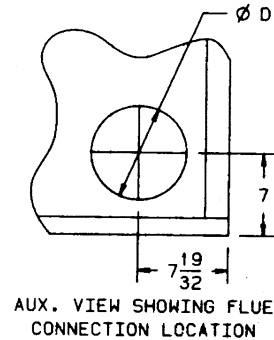
For additional information, refer to page 37.

TECHNICAL DATA - Models OH and OB

Size	OH95	OB95	OH140	OB140	OH190	OB190
BTUH Input	118,000	118,000	173,000	173,000	229,000	229,000
BTUH Thermal Output	97,000	97,000	142,000	142,000	188,000	188,000
Nozzle Input (GPH)	.85	.85	1.25	1.25	1.65	1.65
Full-Load Amps (115 volt)	6	11	7	11	7	16
Fan Motor RPM	1050	--	850	--	850	--
Blower Motor RPM	--	1725	--	1725	--	1725
Motor HP	1/8	1/2	1/4	1/2	1/4	3/4
CFM (Free Air)	2000	2000	3200	3200	3200	3200
CFM @ .25" ESP	--	1450	--	2140	--	2140
Throw at 9' Mounting Height (feet)	50	50	65	65	65	65
Flue Diameter (inches)	7	7	8	8	8	8
Blower Size (inches)	--	12-5/8 x 9-1/2	--	15 x 11-1/8	--	15 x 11-1/8
Fan Diameter (inches) and Pitch (°)	18 - 33	--	22 - 36	--	22 - 36	--
Approximate Net Wt (lbs)	290	355	345	410	345	410
Approximate Shipping Wt	340	420	405	495	405	495



Model	A	B	C	D
OH 95	8	27-3/8	33	7
OB 95	18-3/4	27-3/8	33	7
OH140/190	9-1/2	37-3/8	43	8
OB140/190	22	37-3/8	43	8



Discharge Duct Opening Dimensions - Model OB		
OB	Width	Height
95	30"	16-1/4"
140/190	40"	16-1/4"

Draft Regulator Requirement - ALL Model OH/OB installations require a draft regulator (barometric draft control device) in the vent.

- Model OH/OB with a CSA Label** - A draft regulator is factory-supplied and must be installed.
- Model OH/OB with a UL Label** - a Factory-supplied draft regulator is available as an option (Option BV2 or DB1). Either the optional draft regulator or a field supplied, UL-approved draft regulator must be installed.

CLEARANCE: An 18" clearance is required from the top of the draft control to a combustible ceiling.

Required Clearances

	OH	OB
Top	2"	6"
Front	48"	48"
Burner Side (for service)	18"	18"
Side Opposite Burner (for service)	18"	18"
Rear	24"	6"
Bottom	6"	6"
Flue pipe - units with UL label	18"	18"
Flue pipe - units with CSA label	9"	9"