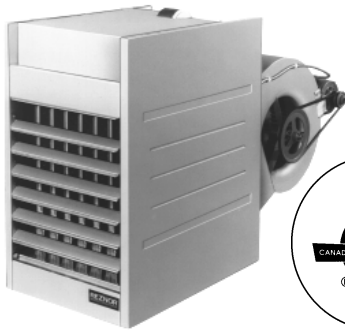


REZNOR**MODEL
BE****GAS-FIRED, POWER-VENTED,
BLOWER-TYPE UNIT HEATER FOR
COMMERCIAL/INDUSTRIAL USE****DESCRIPTION****CAN/CGA 2.6**

Reznor® Series 100, Model BE gas-fired unit heaters are designed for 80% thermal efficiency and were developed to provide an annual fuel use improvement of up to 25% when compared with gravity-vented unit heaters. The use of a factory-installed power venter, with metered combustion air, limits burner flue losses while reducing vent pipe size. A sealed flue product collection chamber (in place of the draft diverter on a gravity-vented unit), reduces the loss of dilution air from the room in both the on and off cycles.

The Model BE unit heaters use either natural or propane gas, as specified, in sizes from 25,000 through 400,000 BTUH gas input. These units are designed for ceiling suspension with a centrifugal blower for air delivery. Sizes 25-100 are equipped with a direct drive blower motor with multi-speed taps capable of handling up to .50" w.c. of external static pressure. Sizes 125-400 are standardly equipped with a blower using an adjustable belt drive and motor capable of handling external static pressure up to .25" w.c. Optional motors and drives are available to increase the blower capability to handle up to .50" w.c. of external static pressure.

Standard features on the Model BE Series include an intermittent spark pilot and a single-stage, 24-volt gas valve. A terminal strip connector facilitates field connection to a remote 24-volt thermostat for automatic operation. Each unit is provided with a fan control and all required limit safety controls and a combustion air pressure switch that verifies proper vent flow before allowing operation of the gas valve.

These units are approved for installation in The United States and Canada by the Canadian Standards Association (CSA). Canadian units require the selection of a totally enclosed motor. (An open motor may be selected for a C.G.A. approved heater only when the heater will be equipped with a Reznor® field-installed blower cabinet.)

STANDARD FEATURES

- Orifices for natural gas
- Aluminized steel heat exchanger
- Aluminized steel burner rack with stainless steel insert
- Spark-ignited intermittent safety pilot with electronic flame supervision
- Single-stage combination gas valve (field adjustable for high altitude operation)
- 115/1/60 supply voltage - Sizes 25-300
- 230/1/60 supply voltage - Size 400

NOTE: Regulated combination redundant gas valve consists of combination pilot solenoid valve, electric gas valve, pilot filter, pressure regulator, pilot shutoff, and manual shutoff, all in one body. Gas supply pressure must not exceed 0.5 psi (8 oz. or 14" w.c.). Minimum inlet pressure for natural gas is 5" w.c.; minimum inlet pressure for propane gas is 11" w.c.

Page 10

- A.G.A. Models - ODP motor with internal overload
- C.G.A. Models - Totally enclosed blower motor
- Motor contactor - Sizes 300 and 400
- Direct drive blower with multi-speed taps - Sizes 25-100
- Adjustable belt drive blower - Sizes 125 - 400
- Fan and limit safety controls
- Differential air pressure switch to verify vent flow
- 24-volt control voltage transformer
- Factory-installed power venter
- Horizontal louvers or Duct adapter
- Terminal strip connector for 24-volt field wiring
- Convenient bottom burner access
- 4-point 3/8"-16 threaded hanger connections
- Vent cap (C.G.A. only)

OPTIONAL FEATURES - Factory Installed

- Equipped for propane gas
- Equipped for high altitude (2001-9000 ft)
- E-3 (409) stainless steel heat exchanger and burner
- Two-stage gas control (50% low fire) - Sizes 75-400
- Spark ignited, intermittent safety pilot with timed lockout (required for propane gas)
- Manual summer/winter switch
- Burner air shutters
- 208/230 single phase supply voltage
- 208/230 three phase supply voltage
- 460 three phase supply voltage - Sizes 125-400
- 575 three phase supply voltage - Sizes 125-400
- Belt guard and/or blower inlet guard
- Alternate motor HP and drive - Sizes 50-400 (See page 24)
- Burner air shutters
- Totally enclosed blower motor
- Low ambient fan control relay

OPTIONS/ACCESSORIES - Field Installed

- | | |
|--|--|
| <ul style="list-style-type: none"> • Vertical louvers • Downturn air nozzle, 25-65° or 50-90° variable air deflector range - See page 35 • Thermostat and relay kits • Air recirculation kits - See page 35 • Manual summer/winter switch • Filter cabinet with 1" or 2" filters (see pressure drops, page 24) • Polytube adapter - Models 75-400 (See page 36) • Multiple heater control • Hanger kits to suspend from 1" pipe or to use with vibration isolation suspension | <ul style="list-style-type: none"> • Burner air shutters • Unit-mounted thermostat bracket • Vent cap (A.G.A.) • Step down transformer 230/115 or 460/115 - Sizes 25-100 (See page 35) • Low ambient fan control relay kit • Belt guard and/or blower inlet guard • Single-stage and two-stage thermostats • Thermostat guard with locking cover • Manual shutoff valve and union • Gas conversion kit |
|--|--|

NOTE: Not certified for residential use.

WARNING: Gas-fired appliances are not designed for use in hazardous atmospheres containing flammable vapors or combustible dust, or atmospheres containing chlorinated or halogenated hydrocarbons.

Installations in public garages or airplane hangars are permitted when in accordance with ANSI Z223.1 and NFPA 54 Codes or CAN1-B149 Codes and enforcing authorities.

TECHNICAL DATA - Model BE

Size	25	50	75	100	125	165	200	250	300	400
BTUH Input	25,000	50,000	75,000	100,000	125,000	165,000	200,000	250,000	300,000	400,000
BTUH Thermal Output (80%)*	20,000	40,000	60,000	80,000	100,000	132,000	160,000	200,000	240,000	320,000
Vent Diameter (inches)	4	4	4	4	5	5	5	5	6	6
Gas Connection - Natural Gas**	1/2"	1/2"	1/2"	1/2"	1/2"	1/2"	1/2"	1/2"	3/4"	3/4"
Control Amps (24-volt)	0.55	0.55	0.55	0.55	0.55	0.55	0.55	0.55	0.65	0.65
Full-Load Amps (115 volt)	4.0	4.0	6.4	6.4	6.7	9.8	9.8	11.8	13.8	230V-9.6
Normal Consumption (watts) (60°F rise and .25" w.c. ESP)	180	215	385	475	565	785	825	1075	1395	1725
Maximum CFM***	410	820	1230	1645	2055	2715	3290	4115	4935	6580
Minimum CFM ***	245	490	740	985	1235	1625	1975	2465	2960	3950
Standard Motor HP	1/6	1/6	1/3	1/3	1/3	1/2	1/2	3/4	1	1-1/2
Blower Size (inches)	9x6	9x6	9x6	9x9	10x10	12x9	15x11	15x11	15x11	15x15
Approximate Net Wt (lbs)	97	104	118	130	180	206	240	278	301	395
Approximate Shipping Wt (lbs)	197	210	233	245	322	348	390	436	459	567

*A.G.A. ratings for altitudes to 2000 ft. Above 2000 ft, de-rate by orifice change, 4% for each 1000 ft above sea level.

*C.G.A. ratings for altitudes to 2000 ft. High altitude units (2001-4500 ft) are de-rated by 10% of maximum input.

**Gas connection for propane is 1/2" for all sizes. Sizes shown are for gas connection to a single-stage gas valve; NOT gas supply line size.

***See pages 24- 27.

Filters for Optional Blower Cabinet

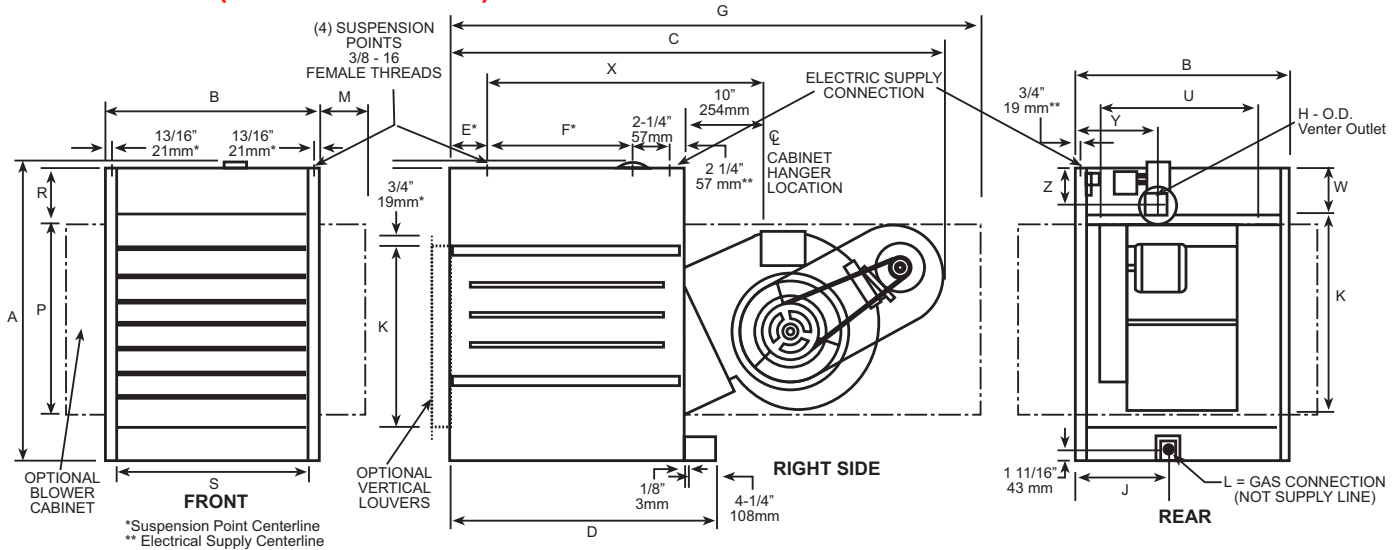
Model	Qty	*Filter Size
25-125	1	20x20
165-200	1	16x25
	1	20x25
250-300	2	16x20
	2	20x20
400	2	16x25
	2	20x25

*1" or 2" permanent filters

Required Clearances

Top & Flue Connector	6"
Sides	18"
Bottom	12"
(when supplied with optional downturn nozzle, bottom clearance is 42"). For service purposes, in standard units, bottom clearance exceeding 12" minimum is not required, but may be desirable.	
Rear	24"
For service purposes the back of the unit must have 24" clearance.	

DIMENSIONS (inches + or - 1/8")



Size	A	B	C	D	E	F	G	H	J	K	L	M	N	P	R	S	T	U	W	X	Y	Z	
			③			④	①③			①②	Nat Pro	①	①	①	①	②	②	①	①	⑤			
25	29-3/4	13-1/2	43-1/2	31-1/2	5-7/8	14-1/2	61-1/2	4	10-1/4	15-7/8	1/2	1/2	3-3/4	21	17-3/4	5-1/4	10-3/4	8-1/2	14-3/4	6-1/4	31-1/4	9-3/4	3
50	29-3/4	13-1/2	50	31-1/2	5-7/8	14-1/2	61-1/2	4	10-1/4	15-7/8	1/2	1/2	3-3/4	21	17-3/4	5-1/4	10-3/4	8-1/2	14-3/4	6-1/4	31-1/4	9-3/4	3
75	29-3/4	15-1/2	50	31-1/2	5-7/8	14-1/2	61-1/2	4	10-1/2	15-7/8	1/2	1/2	2-3/4	21	17-3/4	5-1/4	12-3/4	8-1/2	14-3/4	6-1/4	31-1/4	10-1/2	3
100	29-3/4	17-1/2	50	31-1/2	5-7/8	14-1/2	61-1/2	4	12-7/8	15-7/8	1/2	1/2	1-3/4	21	17-3/4	5-1/4	14-3/4	8-1/2	14-3/4	6-1/4	31-1/4	10-1/2	3
125	29-3/4	23-1/4	47-1/2	31-1/2	5-7/8	14-7/8	66	5	14-1/2	15-7/8	1/2	1/2	1-3/8	21	17-3/4	5-1/4	20-1/2	8-1/2	20-1/2	6-1/4	35-3/4	11-1/2	2-5/8
165	40	20-1/4	61	36	4-7/8	19-1/2	76-1/4	5	14-1/4	23-7/8	1/2	1/2	2-7/8	26	25-1/4	7-1/4	17-1/2	11-1/2	20-1/2	8	36-3/4	11-3/4	4-1/8
200	40	23-1/4	66-1/2	36	4-7/8	19-1/2	76-1/4	5	14-3/8	23-7/8	1/2	1/2	1-3/8	26	25-1/4	7-1/4	20-1/2	11-1/2	20-1/2	8	36-3/4	11-3/4	4-1/8
250	40	28-3/4	66-1/2	36	4-7/8	19-1/2	76-1/4	5	12-3/8	23-7/8	1/2	1/2	5-7/8	40-1/2	25-1/4	7-1/4	26	11-1/2	26	8	36-3/4	11-3/4	4-1/8
300	40	28-3/4	66-1/2	36	4-7/8	19-1/2	76-1/4	6	12-3/8	23-7/8	3/4	1/2	5-7/8	40-1/2	25-1/4	7-1/4	26	11-1/2	26	8	36-3/4	11-3/4	3-5/8
400	40	37	66-1/2	36	4-7/8	19-1/2	76-1/4	6	13	23-7/8	3/4	1/2	6-3/4	50-1/2	25-1/4	7-1/4	34-1/4	11-1/2	34-1/4	8	36-3/4	11-3/4	3-5/8

NOTES: ①When equipped with optional blower cabinet. ②When equipped with optional duct flange. ③Dimension includes a 3/4" flange on rear of blower cabinet. ④Use with 4-point suspension without blower cabinet. ⑤Use with 4-point suspension with blower cabinet. ⑥Contactor is standard on Models 300 & 400. ⑦Contactor location with optional 3 phase motors on Models 50, 75, 100 & 125. ⑧Deduct 6-5/8" on Models 50, 75 & 100 when equipped with direct drive motor.