

APPLICATION

The Reznor EGH heater has been designed specifically for heavy duty use in industrial environments. This heater will reduce the downtime and maintenance costs experienced with heaters of standard design.



STANDARD EGH PRODUCT FEATURES (Cont'd):

- motor mounted outside of the element bundle eliminating premature failure due to overheating and providing easy access for motor maintenance
- elements are robust finned tubular sheathed type with epoxy sealed terminals to eliminate contamination from moisture and airborne impurities

MOUNTING CONFIGURATIONS

FIGURE 1 - HORIZONTAL AIR FLOW WALL MOUNT

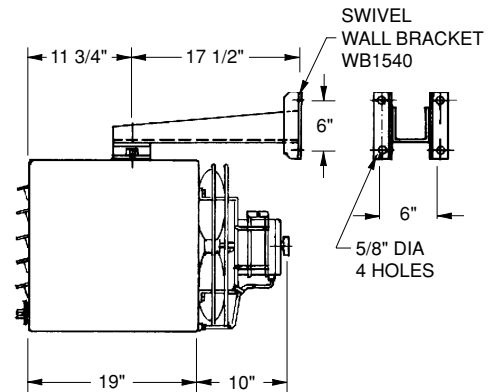
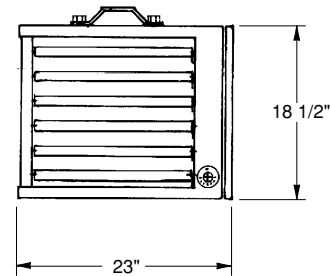


FIGURE 2 - HORIZONTAL AIR FLOW CEILING MOUNT



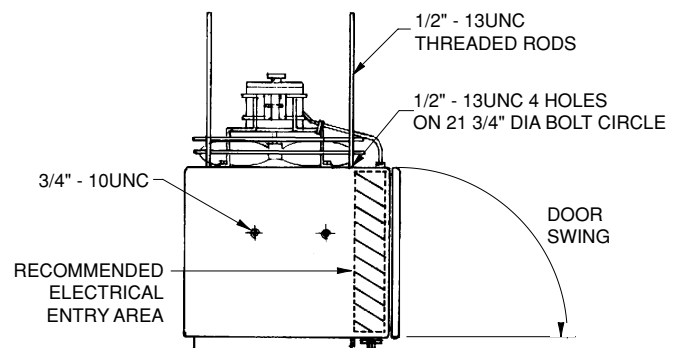
SPECIFICALLY DESIGNED FOR APPLICATION IN NON-HAZARDOUS ENVIRONMENTS

- | | |
|---------------------------|-----------------------|
| • mine shafts | • repair shops |
| • pulp and paper mills | • wash down areas |
| • hoist houses | • weigh scale pits |
| • welding shops | • elevator shafts |
| • maintenance shops | • high humidity areas |
| • sewage treatment plants | • crane cabs |
| • chemical plants | |

STANDARD EGH PRODUCT FEATURES:

- approved for horizontal and vertical air flow
- automatic reset high limit
- 15, 20, 25, 30, 40, 50 kw units
- 40 and 50 kw units incorporate split loads (50%) for remotely controlled energy management systems
- factory installed transformers, contactors, and thermostats where specified
- individually adjustable louvers
- factory balanced aluminum fan blade
- fan delay in "ON" and "OFF" cycles
- full sized control panel with hinged removable door, constructed to NEMA 12 standards
- "Fan Only" terminals for connection to remote switch
- 14 Gauge steel cabinet
- epoxy painted (ASA 61 Grey) for superior resistance to corrosion
- 1/3 Hp motor with sealed ball bearings and totally enclosed construction

FIGURE 3 - VERTICAL AIR FLOW



FORCED AIR HEATERS - HEAVY DUTY TYPE EGX (continued)

TABLE 1 - SPECIFICATIONS MODEL EGH

SIZE	KW (B.T.U./HR)	VOLTS	PHASE	C.F.M.	TEMP. RISE °F (°C)	NET WEIGHT
15	15 (51180)	208	3	1800	25 (14)	105 LBS. 47.6 KG
		240	3			
		480	3			
		600	3			
20	20 (68240)	208	3	1800	34 (19)	105 LBS. 47.6 KG
		240	3			
		480	3			
		600	3			
25	25 (85300)	208	3	1800	41 (24)	105 LBS. 47.6 KG
		240	3			
		480	3			
		600	3			
30	30 (102300)	480 600	3	2100	41 (24)	105 LBS. 47.6 KG
40	39 (136480)	480 600	3	2100	58 (32)	125 LBS. 56.7 KG
50	50 (170600)	480 600	3	2100	72 (40)	125 LBS. 56.7 KG

NOTES

1. Motor voltage and phase is same as heater supply.
2. Standard control voltage is 240V. A control transformer is included where required. Other control voltages are available (check factory).
3. 15, 20, 25, 30 kw units are pre-wired as one circuit. The split load feature (50%) is available as an option.
4. 40 and 50 kw units are pre-wired for split load (50%) control by customer unless specified otherwise.
5. All motors are 1/3 hp, totally enclosed ball bearing type, permanently lubricated, thermally protected.

OPTIONAL FACTORY INSTALLED FEATURES

- built-in thermostat 41°F to 100°F (5°C to 38°C)
- disconnect switch with door interlock
- HRC main load fuses
- fused control circuit
- manual reset high limit
- "Fan Only" switch
- low voltage relay for remote 24V thermostat
- epoxy painted fan blade and motor
- special wattages and voltages
- special control voltages (standard is 240V)
- available in special finishes
- split load feature - 15, 20, 25, 30 kw units
- nickel plated elements
- alloy elements with brazed alloy fins
- NEMA 4 construction - epoxy & sealed elements
- stainless steel cabinet

ACCESSORIES FOR FIELD INSTALLATION

- Thermostat kit 41°F to 100°F (5°C to 38°C)
- Wall mount bracket (horizontal air flow)
- air diffuser (vertical air flow)
- "Fan Only" switch and cover plate
- line voltage and low voltage thermostats

TO ORDER SPECIFY:

Model number, voltage, phase, kilowatts, optional features, and accessories.