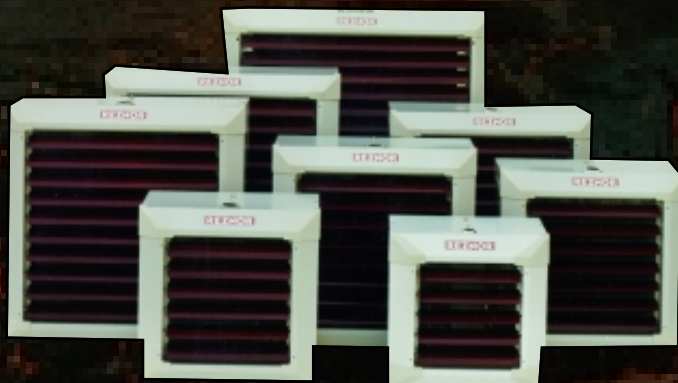


Get into hot water with



REZNOR[®]

Get your feet wet with our **NEW** family of hydronic unit heaters



Superior design - contractors say, "It's a beautiful thing"

Proven product

HI - LO heating capacity with vertical or horizontal mounting (Four possible configurations with each unit)

Most attractive heater on the market

FEATURES AND BENEFITS

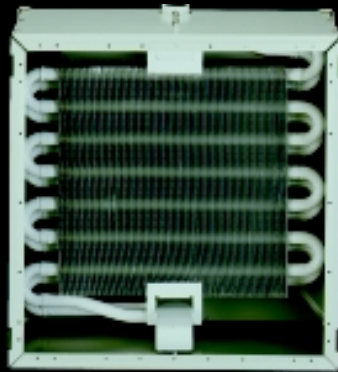
CABINET

- Sleek European Design
- Cabinets and louvers constructed of galvanized pre-painted steel
- Attractive beige painted finish with matching molded corner sections and bordeaux louvers
- Cabinet held together by shake-proof screws and strong molded corner sections



HEAT EXCHANGER

- Heat exchanger made from thick-walled large diameter copper tubing and aluminum fins
 - Large copper tubing diameter results in greater water flow
 - More water flow results in quicker heat-up
 - Thick walled copper tubing stands up to pressure
 - The spacing between the aluminum fins, as well as their thickness, facilitate cleaning and maintenance which is essential to keep the unit efficient
- The heat exchanger of every unit is factory tested to 30 bar of pressure (about 400 psi)
- Heat exchanger paint coating makes it long lasting and increases thermal output in addition to giving it a clean look



FAN & MOTOR ASSEMBLY

- Every fan & motor assembly includes galvanized finger guard as standard equipment. No need to order optional finger guard for units mounted below 8 feet.
- Fans are mounted with vibration resistant mounting for quiet operation.
- Every Model WS motor has internal overload protection standard. Explosion proof motors are also available
- IP44 totally enclosed permanent lube motor is standard on every unit, resulting in longer motor life in all environments (maintenance free).
- Every motor can be field set for high speed, low speed or two speed
 - High speed for increased heating capacity
 - Low speed for quieter operation
 - Two speed selectable for increased heating capacity when necessary and quieter operation when required



MORE VERSATILITY / FEWER MODELS TO STOCK

- Every unit can be mounted vertically or horizontally
- Unit can operate on steam or hot water
- Optional air flow induction optimizer greatly increase air throw
- Optional door air curtain adapter for overhead door application
- Due to versatility of Model WS, just 9 model-sizes can replace 25-30 model sizes of other hydronic units
 - 13 - 350 MBH
 - 270 - 4,750 cfm



AIR FLOW INDUCTION OPTIMIZER



DOOR AIR CURTAIN ADAPTER

Technical Data

		Fan Speed	Size								
			18/24	23/33	44/62	60/85	78/110	96/120	140/175	190/238	300/350
Maximum Heating Capacity ①	MBH	Low	18	23	44	60	78	96	140	190	300
		High	24	33	62	85	110	120	175	238	350
	Watts	Low	5,276	6,741	12,896	17,586	22,862	28,138	41,034	55,689	87,930
		High	7,034	9,672	18,172	24,914	32,241	35,172	51,293	69,758	102,585
	kcal/hr	Low	4,536	5,796	11,089	15,121	19,657	24,194	35,282	47,883	75,605
		High	6,048	8,317	15,625	21,421	27,722	30,242	44,103	59,980	88,206
Maximum Leaving Air Temperature (L.A.T.) ②	°F	Low	121°	124°	132°	129°	125°	134°	134°	140°	133°
		High	115°	121°	126°	123°	121°	131°	130°	137°	128°
	°C	Low	49°	51°	56°	54°	52°	57°	57°	62°	56°
		High	46°	49°	52°	51°	49°	55°	54°	58°	53°
Approximate Fan RPM	Low	1,100	1,100	1,100	1,100	1,100	850	850	850	850	
	High	1,550	1,600	1,600	1,600	1,600	1,080	1,080	1,080	1,080	
Noise Level at 16-1/2 ft (5m) - dB(A)	Low	45	46	49	54	57	47	49	52	61	
	High	52	54	58	63	65	52	55	60	67	
Approximate Air Volume	cfm	Low	270	330	560	800	1,100	1,200	1,750	2,200	3,800
		High	400	500	860	1,250	1,650	1,550	2,300	2,850	4,750
	m ³ /hr	Low	459	561	952	1,359	1,869	2,039	2,973	3,738	6,457
		High	680	850	1,461	2,124	2,804	2,634	3,908	4,842	8,071
Supply Air Velocity	fpm	Low	382	443	522	549	578	500	590	613	755
		High	540	672	802	860	866	642	773	793	936
	m/min	Low	116	135	159	167	176	152	180	187	230
		High	165	205	244	262	264	196	236	242	285
Rows of Coils in Heat Exchanger			1	2	2	2	2	2	2	2	
Water Content	Gallons		1/4	1/2	11/16	7/8	1	1 3/16	1 9/16	1 7/8	2 15/16
	Liters		1.0	2.0	2.6	3.2	3.8	4.6	6.0	7.0	11.1
Approximate Weight	lbs.		37	44	49	55	66	75	88	101	146
	Kg		17	20	22	25	30	34	40	46	66

① Maximum heating capacity based on steam pressure at 2 psi with entering air temperature of 60°F (16°C) See tables on page 4 for more information.

② Based on an entering air temperature of 60°F (16°C).

Limited Warranty

Thomas & Betts Corporation warrants to the original owner-user that this Reznor product will be free from defects in material or workmanship. This warranty is limited to twelve (12) months from the date of original installation, whether or not actual use begins on that date, or eighteen (18) months from date of shipment by Thomas & Betts Corporation, whichever comes first

Extended Warranty

Model WS -- Extended one (1) year non-prorated warranty on the heat exchanger assembly. If leaks or other failures occur within the warranty period, Thomas & Betts will pay up to \$50 for a qualified contractor to make necessary repairs. If heat exchanger can not be repaired, Thomas & Betts will exchange the damaged unit for an entire new hydronic heater. Installation labor charge of replacement unit is not covered by Thomas & Betts Warranty. (See warranty form for complete details.)



Reznor Model WS Hydronic Unit Heaters are manufactured in an ISO 9001 registered facility.

In keeping with our policy of continuous product improvement, we reserve the right to alter, at any time, the design, construction, dimensions, weights, etc., of equipment information shown here.

REZNOR

Thomas & Betts